
User's Manual

Model PH8HH pH Holder for High Purity Water

IM 12B07P01-01E

vigilantplant.[™]

Contents

1. Overview	1-1
1.1 Standard Specifications	1-1
1.2 Model and Suffix Codes	1-1
1.3 External Dimensions	1-2
2. Installation and Piping	2-1
2.1 Unpacking and Environment Check	2-1
2.2 Installation Location	2-1
2.3 Piping	2-3
2.3.1 Main Cautions regarding Piping	2-3
2.3.2 Piping Requirements	2-4
3. Operation and Maintenance	3-1
3.1 Names of Components	3-1
3.2 Operation	3-2
3.2.1 Cautions regarding Operation	3-2
3.2.2 Cautions regarding Stopping Operation for a long period	3-2
3.2.3 Returning to Operation	3-2
3.3 Maintenance	3-2
3.3.1 Cleaning the Bypass Flow Path	3-2
Customer Maintenance Parts List	CMPL 12B05P01-01E
Revision Record	i

1. Overview

The Model PH8HH Holder is used with the Model PH8EHP pH Sensor to configure a pH transmitter system for measuring the pH of high-purity water. The conductivity of high-purity water is very low, and so systems for measuring the pH of high-purity water are prone to environmental effects such as flow-related potentials and induced fields as well as the effect of atmospheric CO₂ and leaching of the electrode contact material. The combination of the Model PH8HH Holder with the Model PH8EHP pH Sensor is designed to minimize or eliminate these problems.

1.1 Standard Specifications

Mounting : Bracket mounting
 Pipe mounting (need to specify mounting hardware).
 Wall mounting

Weight : 1.7 kg (body)
 0.7 kg (mounting hardware)

Materials: Acrylic resin, SUS316, chloroprene rubber

Process connection : Flow inlet ; Rc1/4 or 1/4 NPT
 Flow outlet ; Rc1/2 or 1/2 NPT

Operating temperature (of measured liquid) : 0 to 50°C

Sensor used with : PH8EHP pH sensor

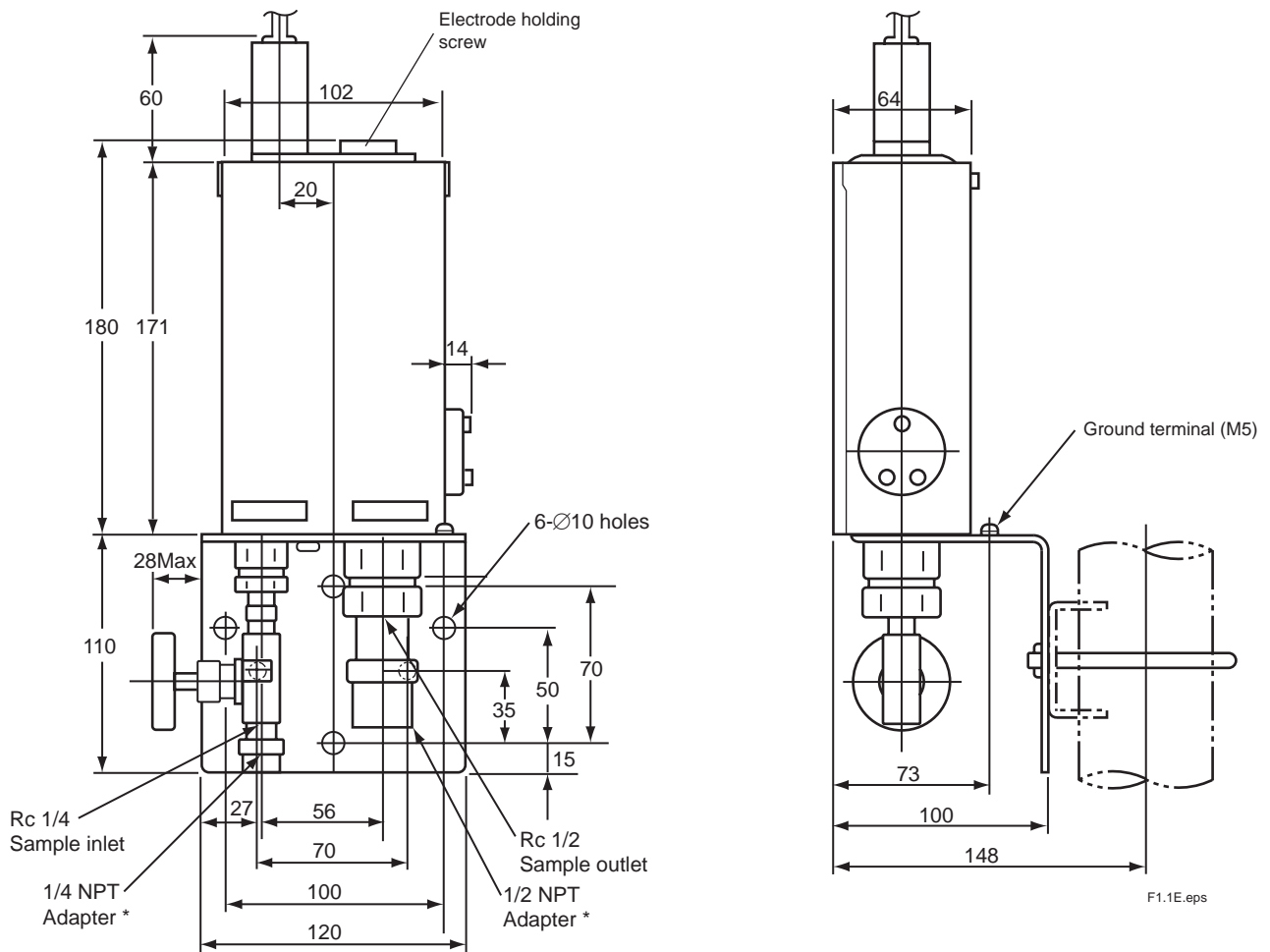
1.2 Model and Suffix Codes

Model	Suffix Code	Option Code	Specifications
PH8HH	pH holder for high purity water
Connection ports	- JPT	Inlet; Rc1/4, Outlet; Rc1/2
	- NPT	Inlet; 1/4NPT, Outlet; 1/2NPT
	- H	Always -H
Style	*A	Style A
Option Mounting Bracket		/P	Pipe mounting bracket
		/W	Wall mounting bracket

T1.1E.eps

1.3 External Dimensions

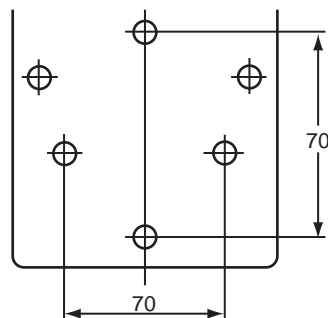
Unit : mm



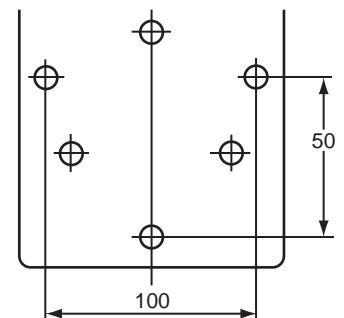
* : PH8HH-NPT

Holder mounting hardware

(1) Holes for pipe (2-inch) mounting



(2) Holes for wall mounting



F1.1.2E.eps

2. Installation and Piping

2.1 Unpacking and Environment Check

When unpacking the PH8HH Holder, dispose of the packing materials with regard for the environment.

2.2 Installation Location

This holder can be (JIS 50A) pipe mounted or wall mounted. For pipe mounting or wall mounting, special hardware is required, and this is supplied only when specified at order time.

The holder should be grounded to minimize the effect of induced fields. When it will not be grounded through the pipe it is mounted on, use the ground terminal on the bracket to ground to earth (up to 100 Ω).

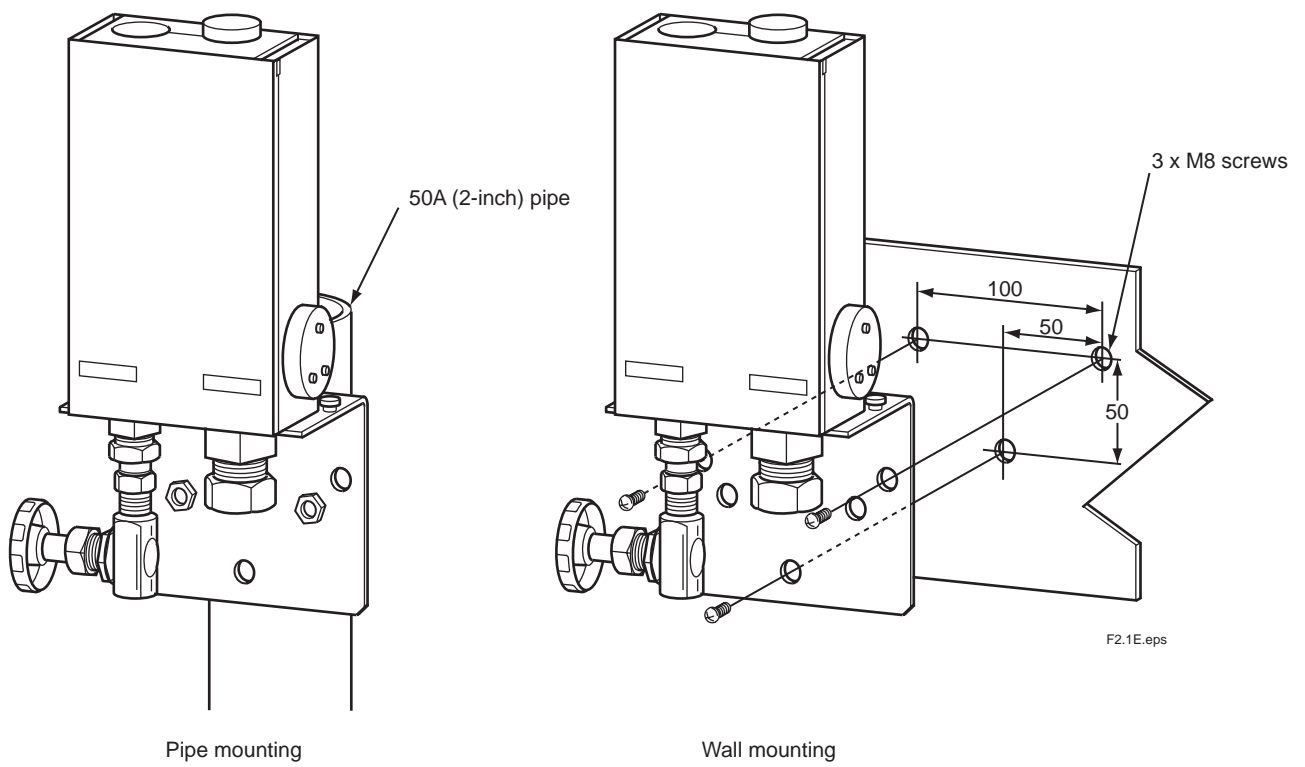


Figure 2.1 Mounting the Holder

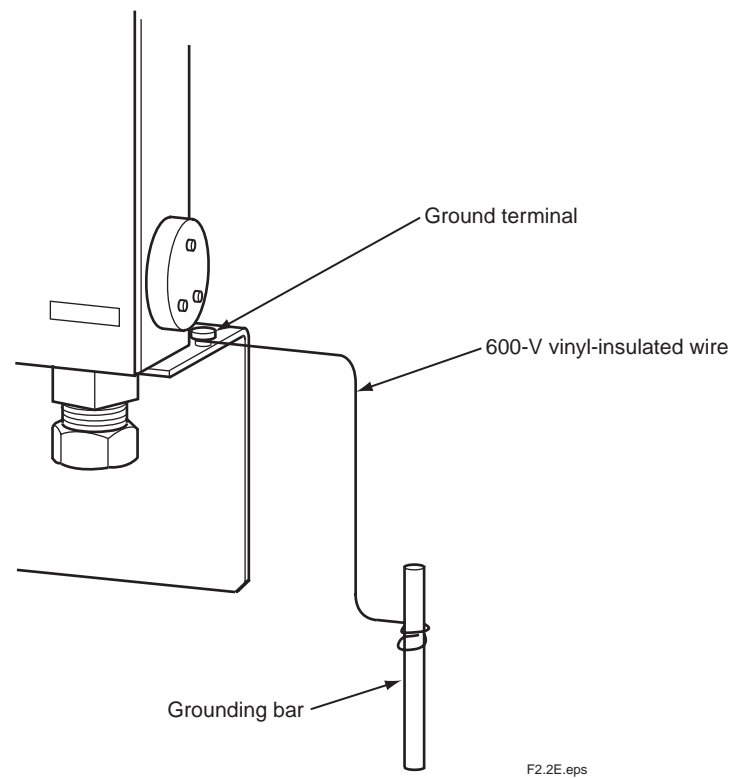


Figure 2.2 Example of Ground Wiring

2.3 Piping

The piping is used to carry the liquid to be measured to the holder.

2.3.1 Main Cautions regarding Piping

(1) Temperature of Liquid to be Measured

The temperature of the liquid supplied to the holder should not exceed 50°C. If there is a possibility that it will, provide cooling.

(2) Pressure of Liquid to be Measured

Liquid in the holder should be at atmospheric pressure. Outlet piping should be level with outlet; outlet piping should not be run above level of outlet.

(3) Flow Rate of Measured Liquid

The optimum flow rate of the liquid to be measured depends on the conductivity of the liquid to be measured (see Fig. 2.3). Normally it is in the range 100 to 600 ml/min.

The length of the piping and the desired speed of response should also be taken into consideration.

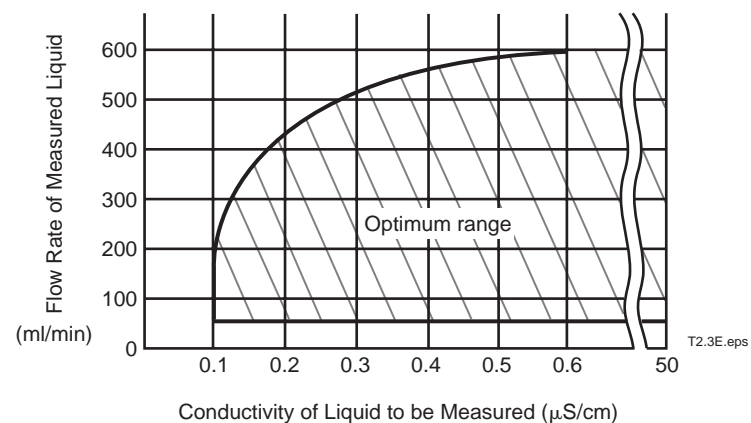


Figure 2.3 Optimum Flow Rate as a Function of Conductivity of Liquid to be Measured

2.3.2 Piping Requirements

<Piping Materials>

Piping materials on the inlet side can adversely affect the pH measurement if they contain corrosive material that may leach out into the measurement liquid.

The following materials are recommended:

- Wire-reinforced flexible PVC tube
- SUS 304 or SUS 316 stainless tube

<Piping example>

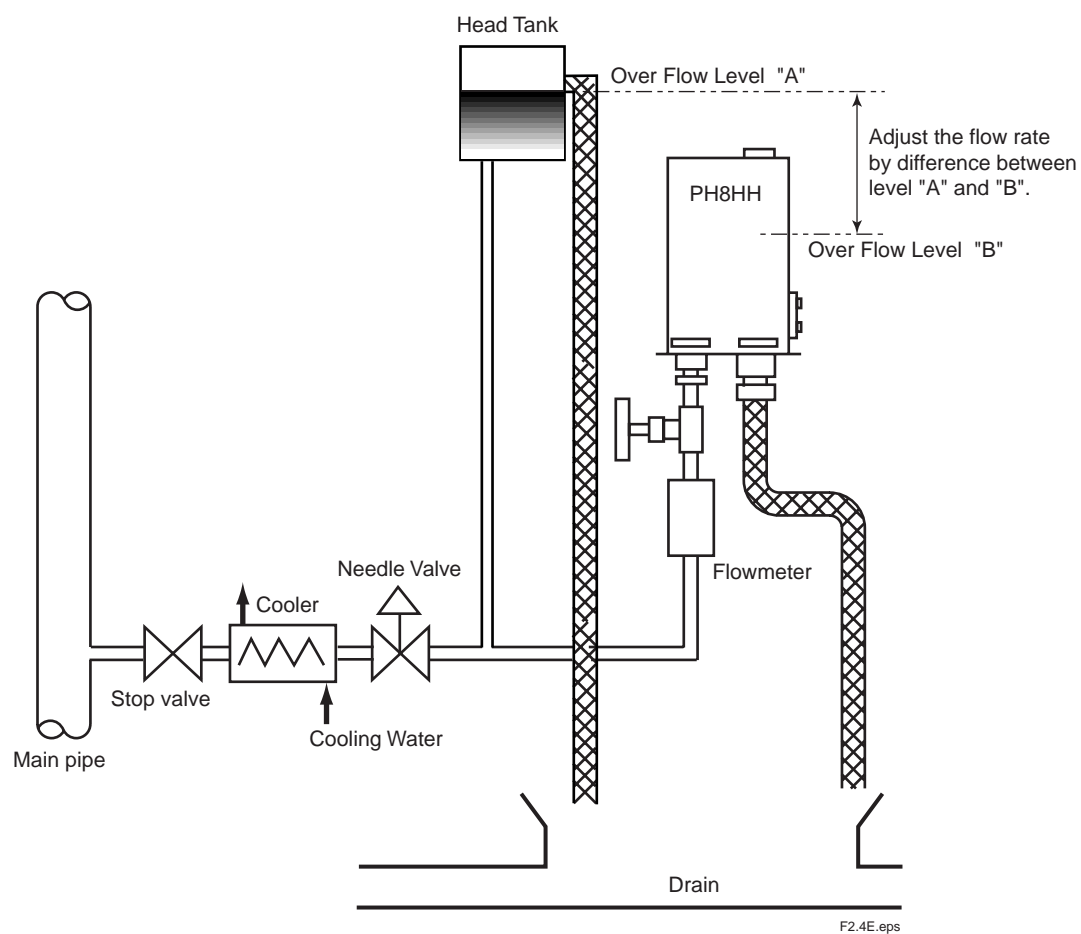


Figure 2.4 Piping example

3. Operation and Maintenance

3.1 Names of Components

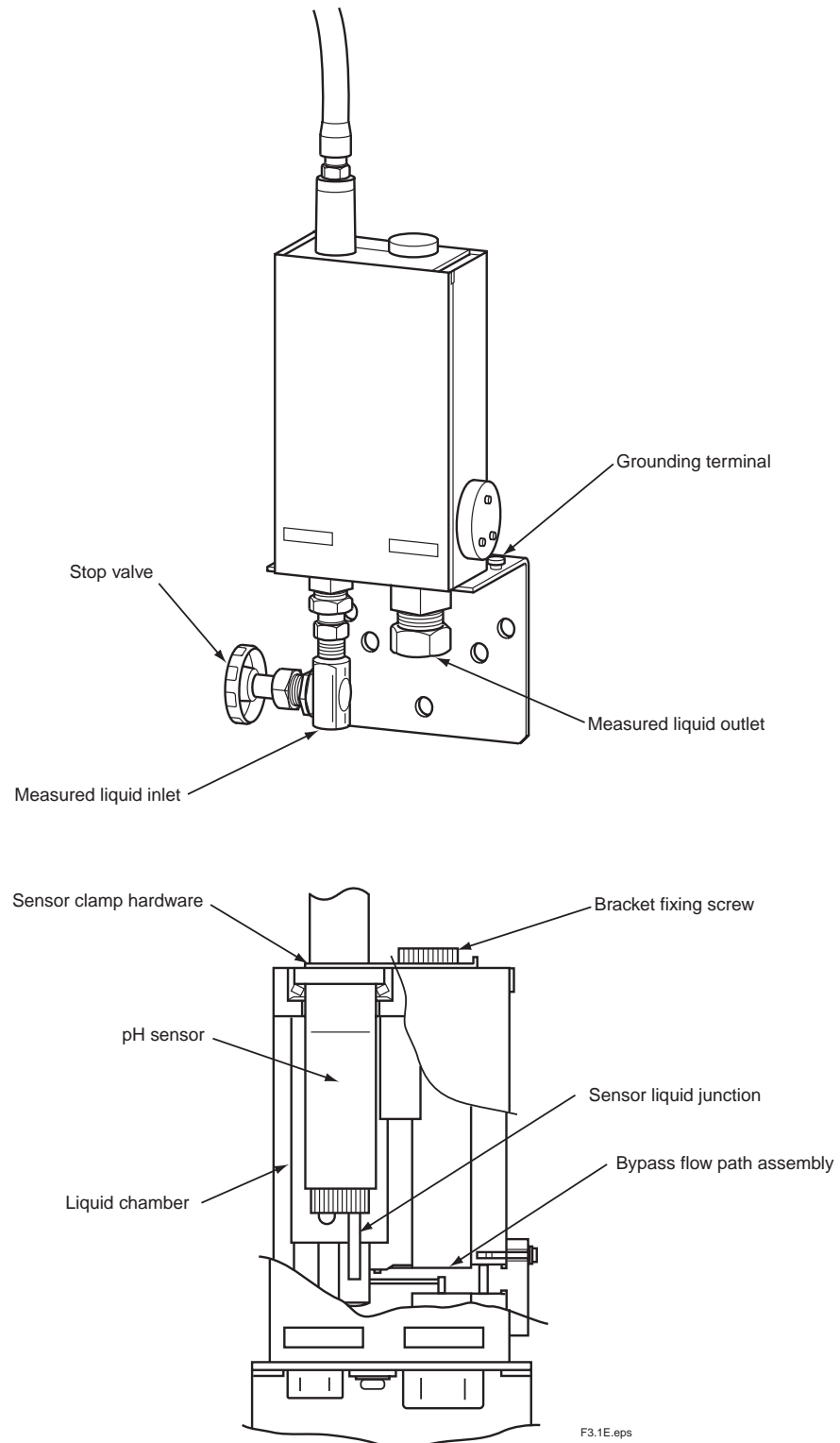


Figure 3.1 Names of Components of PH8HH Holder for High Purity Water

3.2 Operation

3.2.1 Cautions regarding Operation

The liquid to be measured should meet the cautions listed above (see Sec. 1.1)
In particular, the flow should be set so as to minimize measurement error.

3.2.2 Cautions regarding Stopping Operation for a long period

If stopping operation for a long period, it is desirable that you continue to let liquid flow through the holder. If this is not possible, then in principle the sensor should be removed from the holder and the tip of the sensor immersed in liquid in its container. This is to prevent drying out of the glass electrode, or KCl in the liquid junction crystallizing and blocking the bypass part.

3.2.3 Returning to Operation

Normally the flow through the bypass flow path is 20 ml/min. If this part is blocked, or liquid cannot flow into this part, then it will affect the flow of KCl from the sensor. After operation has been stopped for some time, you should clean it and check that this bypass area is not blocked, and that the inside of the holder is not dirty.

3.3 Maintenance

Under normal conditions, unless there is a problem, the holder does not require maintenance. If operation is stopped and KCl from the liquid junction stains the inside of the holder, you should perform the following maintenance.

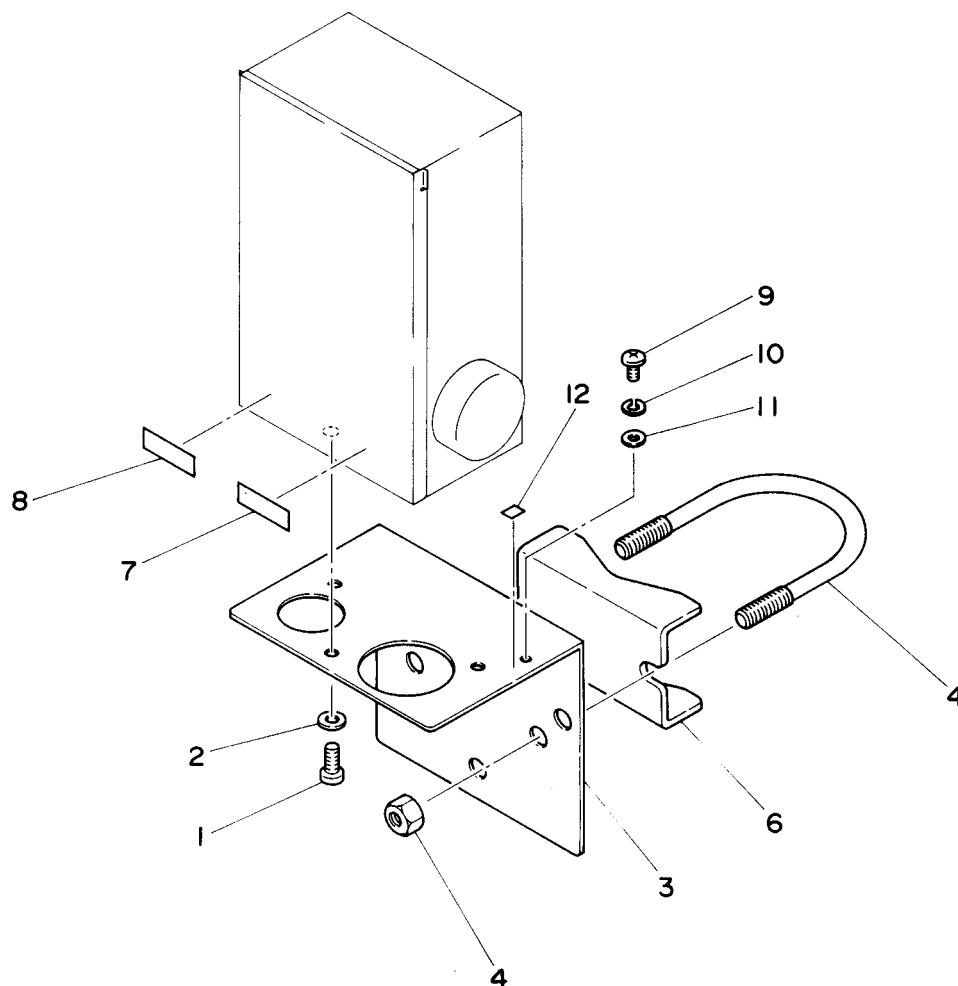
3.3.1 Cleaning the Bypass Flow Path

If the bypass flow path is blocked, clean it as follows:

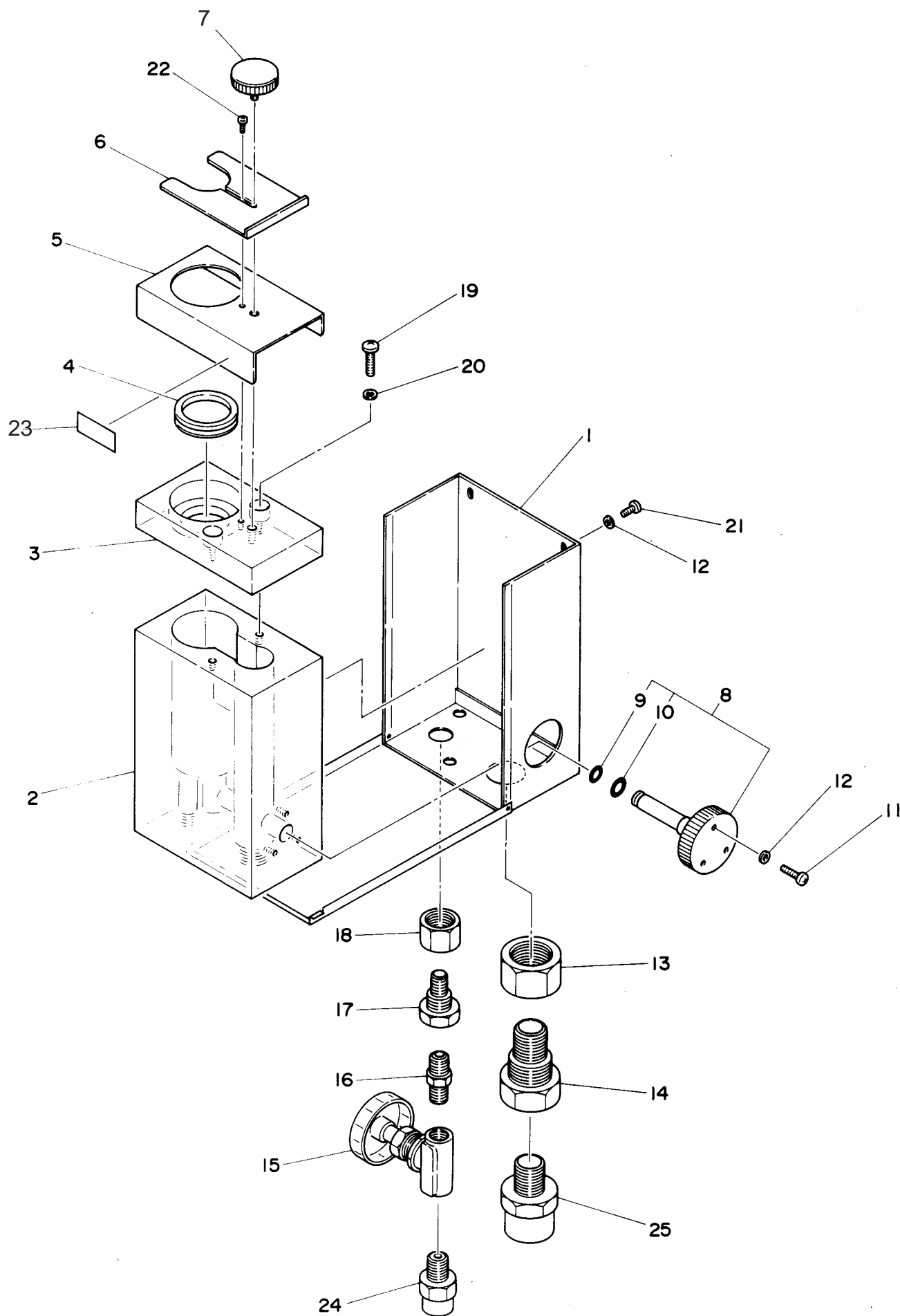
- (1) Remove the bypass flow assembly from the inside of the holder. The bypass flow assembly is fixed to the inside of the holder by three screws, so remove them then pull out the bypass flow assembly.
- (2) Clean any blockage from the bypass flow assembly, using a wire about 0.8 mm dia. If the KCl crystals have dried and solidified, soak the assembly in water first.
- (3) Install the bypass flow assembly. The flow path is not to be reversed; to minimize the possibility of accidental reversal, do not secure the bypass flow assembly by only one fixing screw.

Customer Maintenance Parts List

Model PH8HH pH Holder for High Purity Water



Item	Part No.	Qty	Description
1	Y9612HU	3	Pan H. Screw, M6 ×12
2	Y9601WU	3	Washer
3	K9146AQ	1	Bracket
4	D0117XL-A	1	U-Bolt & Nut
6	L9826AL	1	Bracket
7	L9828HG	1	Label
8	L9828HF	1	Label
9	Y9508LU	1	B.H. Screw, M5 ×8
10	Y9500SP	1	Washer
11	Y9501WU	1	Washer
12	G9325BA	1	Label



Item	Part No.	Qty	Description
1	K9146AJ	1	Case Assembly
2	K9146AA	1	Cell
3	K9146AB	1	Plate
4	L9817QC	1	V-Ring
5	K9146AP	1	Cover
6	K9146AR	1	Plate
7	—	1	Knob Assembly
8	K9146AD	1	Pipe Assembly
9	G9303NG	1	O-Ring
10	G9303NE	1	O-Ring
11	Y9416JU	3	Pan H. Screw, M6 × 16
12	Y9401WU	5	Washer
13	L9800LX	1	Nut
14	L9832BL	1	Nipple (Rc 1/2 Female)
15	L9852CB	1	Valve
16	L9832AA	1	Nipple (Rc 1/4 Female)
17	L9832AG	1	Screw
18	L9800LE	1	Nut
19	Y9520JU	2	Pan H. Screw, M6 × 20
20	Y9500SU	2	Washer
21	Y9410JU	2	Pan H. Screw, M6 × 10
22	Y9308JU	1	Pan H. Screw, M3 × 8
23	Y9301NP	1	Nameplate
24	L9832AT	1	Nipple (1/2NPT Female)
25	G9612BK	1	Nipple (1/4NPT Female)

Revision Record

Manual Title : Model PH8HH pH Holder for High Purity Water

Manual Number : IM 12B07P01-01E

Edition	Date	Remark (s)
1st	Oct. 2001	Newly published
2nd	Jul. 2006	Introduction and CPML are added, and all over revised.

Thank you for selecting our Model PH8HH pH Holder for High Purity Water.

The User's Manual IM 12B07P01-01E 2nd edition supplied with this product has been revised as follows.
Please make a note in your copy.

Addition/Correction

- Page 1-1, Some revision of MS-code ("/W" option deleted).
- Page 2-1, Some revision of Sec. 2.2 Installation Location.
- CMPL 12B05P01-01E revised to 3rd edition (Some of "/P" option P/N modified).

1. Overview

The Model PH8HH Holder is used with the Model PH8EHP pH Sensor to configure a pH transmitter system for measuring the pH of high-purity water. The conductivity of high-purity water is very low, and so systems for measuring the pH of high-purity water are prone to environmental effects such as flow-related potentials and induced fields as well as the effect of atmospheric CO₂ and leaching of the electrode contact material. The combination of the Model PH8HH Holder with the Model PH8EHP pH Sensor is designed to minimize or eliminate these problems.

1.1 Standard Specifications

Mounting : Bracket mounting
 Pipe mounting (need to specify mounting bracket).
 Wall mounting (mounting bracket is supplied with holder).

Weight : 1.7 kg (body)
 0.7 kg (mounting bracket)

Materials: Acrylic resin, SUS316, chloroprene rubber

Process connection : Flow inlet ; Rc1/4 or 1/4 NPT
 Flow outlet ; Rc1/2 or 1/2 NPT

Operating temperature (of measured liquid) : 0 to 50°C

Sensor used with : PH8EHP pH sensor

1.2 Model and Suffix Codes

Model	Suffix Code	Option Code	Specifications
PH8HH	pH Holder for High Purity Water, wall-mount type
Connection ports	- JPT	Rc1/4 (Inlet) , Rc1/2 (Outlet)
	- NPT	1/4NPT (Inlet), 1/2NPT (Outle)
	- H	Always -H
Style	*A	Style A
Option	Mounting Bracket	/P	Pipe mounting bracket

T1.1E.eps

2. Installation and Piping

2.1 Unpacking and Environment Check

When unpacking the PH8HH Holder, dispose of the packing materials with regard for the environment.

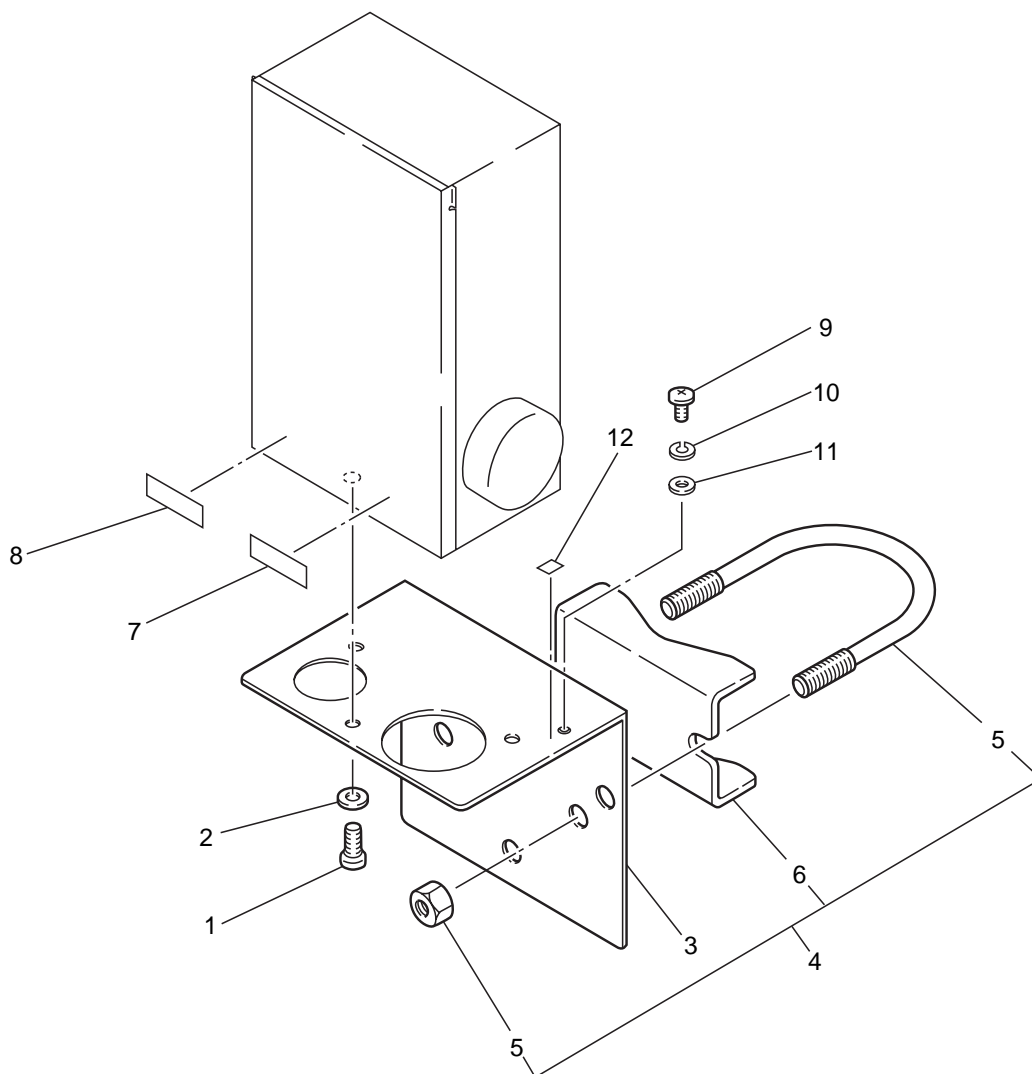
2.2 Installation Location

This holder can be (2-inch) pipe mounted or wall mounted. For pipe mounting special hardware is required, and this is supplied only when specified at order time.

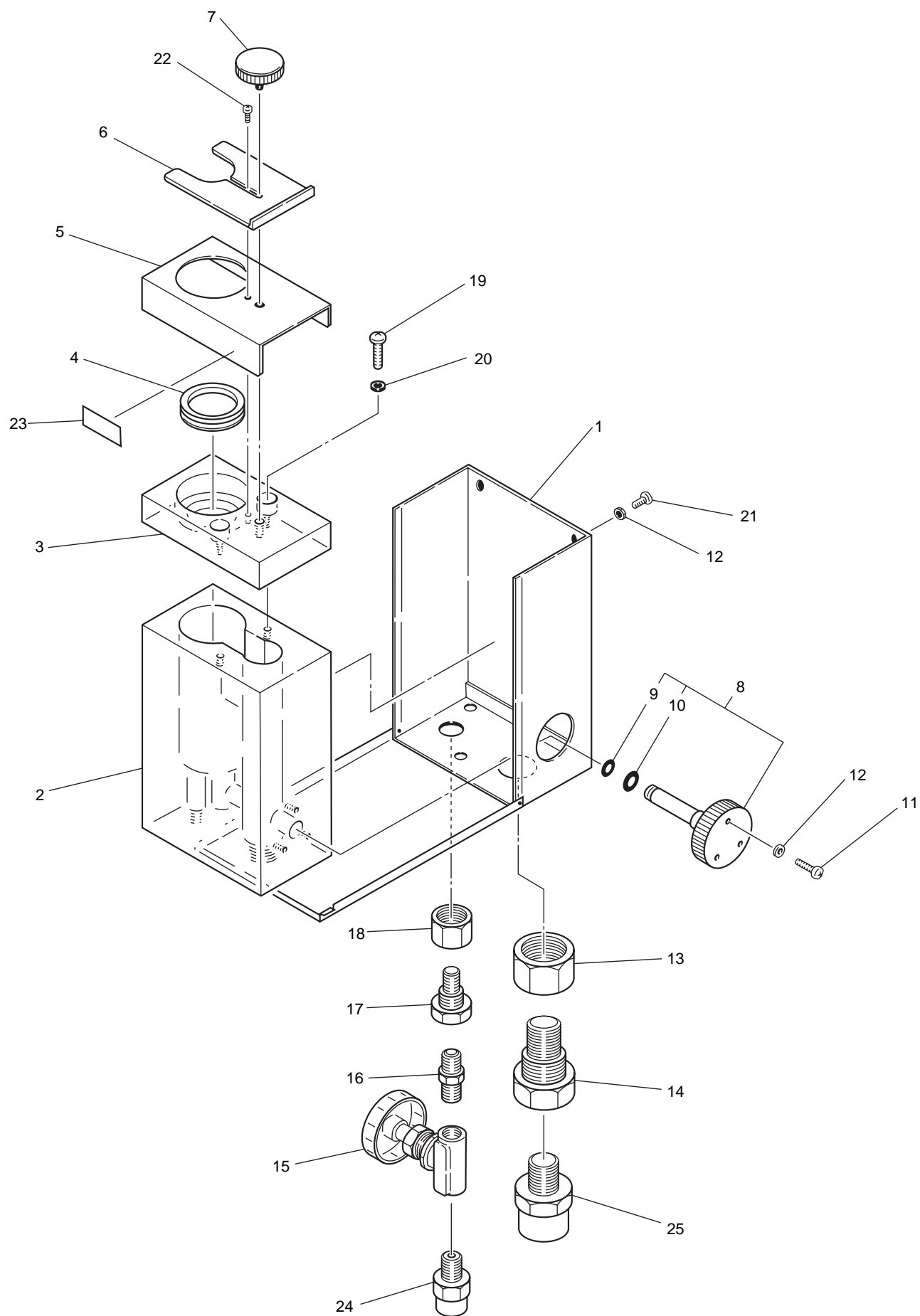
The holder should be grounded to minimize the effect of induced fields. When it will not be grounded through the pipe it is mounted on, use the ground terminal on the bracket to ground to earth (up to 100 Ω).

Customer Maintenance Parts List

Model PH8HH pH Holder for High Purity Water



Item	Part No.	Qty	Description
1	Y9612HU	3	Pan H. Screw, M6 × 12
2	Y9601WU	3	Washer
3	K9146AQ	1	Bracket
4	—	1	Pipe Mounting Set (/P)
5	D0117XL-A	1	U-Bolt Assembly
6	L9826AL	1	Bracket
7	L9828HG	1	Label
8	L9828HF	1	Label
9	Y9508LU	1	B.H. Screw, M5 × 8
10	Y9500SP	1	Washer
11	Y9501WU	1	Washer
12	G9325BA	1	Label



Item	Part No.	Qty	Description
1	K9146AJ	1	Case Assembly
2	K9146AA	1	Cell
3	K9146AB	1	Plate
4	L9817QC	1	V-Ring
5	K9146AP	1	Cover
6	K9146AR	1	Plate
7	—	1	Knob Assembly
8	K9146AD	1	Pipe Assembly
9	G9303NG	1	O-Ring
10	G9303NE	1	O-Ring
11	Y9416JU	3	Pan H. Screw, M6 × 16
12	Y9401WU	5	Washer
13	L9800LX	1	Nut
14	L9832BL	1	Nipple (Rc 1/2 Female)
15	L9852CB	1	Valve
16	L9832AA	1	Nipple (Rc 1/4 Female)
17	L9832AG	1	Screw
18	L9800LE	1	Nut
19	Y9520JU	2	Pan H. Screw, M6 × 20
20	Y9500SU	2	Washer
21	Y9410JU	2	Pan H. Screw, M6 × 10
22	Y9308JU	1	Pan H. Screw, M3 × 8
23	Y9301NP	1	Nameplate
24	L9832AT	1	Nipple (1/2NPT Female)
25	G9612BK	1	Nipple (1/4NPT Female)